

# GUELPH & WELLINGTON TASK FORCE FOR POVERTY ELIMINATION



Presentation to:  
Addressing Poverty and Housing in Dufferin County

# VISION & MISSION



**VISION:** Poverty will be eliminated in Guelph & Wellington

**MISSION:** To work collaboratively, informed by diverse voices of experience, to take local action and advocate for system and policy change to address the root causes of poverty.

## PATHWAYS



Collaboration &  
Partnerships



Research &  
Knowledge  
Mobilization



Strategic  
Communications



Leadership

# ORGANIZATIONAL FRAMEWORK & MEMBERSHIP



[Poverty Task Force (PTF) member committee]



# AFFORDABLE BUS PASS PROGRAM



Collaboration &  
Partnerships



Research &  
Knowledge Mobilization



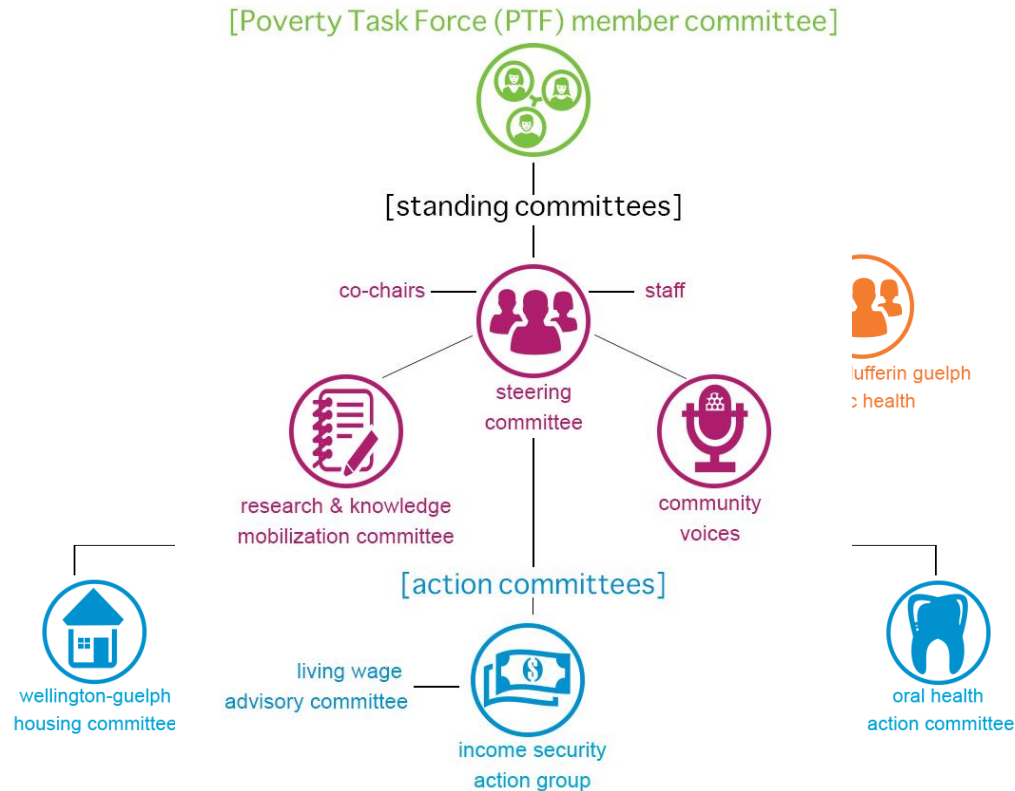
Strategic  
Communications



Leadership

- PTF members raise concerns over City of Guelph discussions about raising transit fares and service reductions
- PTF staff convene ad-hoc transit committee to take local action
- PTF partner with University of Guelph to research impact that lack of access to public transit has on low-income community members
- Ad-hoc transit committee develops recommendations based on research and release report on website
- Members of ad-hoc transit committee provide delegations to council
- Ad-hoc committee works in partnership with City of Guelph to develop affordable bus pass program
- PTF staff continue to sit on City of Guelph committee throughout evaluation of pilot project

# LIVING WAGE



- PTF identifies “Income Inequality” as priority and recommends action on Living Wage
- Staff takes recommendation to Income Security Action Group
- Staff work with Standing Committees to calculate Living Wage in 2013
- ISAG supports community conversation series in 2014

- Staff convenes Living Wage Advisory Committee in partnership with ISAG to develop Employer Recognition Program in 2015
- Employer Recognition Program launched November 6, 2015 with eleven local employers, including first National Living Wage Employer

# FOOD INSECURITY: THE SEED & MARKET BUCKS

- In 2010, emergency food providers ask PTF to take action on emergency food system
- PTF works with University of Guelph to conduct research on what's working and what's not working
- PTF convenes ad-hoc committee to develop short- and long-term recommendations based on research for endorsement by Member Committee

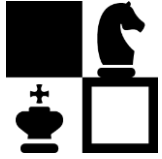
## CITY

- Ad-hoc committee becomes The Seed Community Food Hub Committee
- Staff provides direct support to direction of The Seed in early stages
- The Seed moves to an Aligned Committee, receives OTF

## COUNTY

- PTF partners with County of Wellington and WDGPH to identify & research solutions
- Launches Market Bucks pilot program with Township of Wellington North at Mount Forest Farmers Market
- Conducting evaluation

# CHALLENGES & LESSONS LEARNED



STRATEGY



ADVOCACY &  
COMMUNICATIONS



HOST AGENCY



EVALUATION



CHAMPIONS



BUDGET

# ACKNOWLEDGEMENTS



The Poverty Task Force would like to thank **Wellington-Dufferin-Guelph** for their support as our **Host Agency**.



The Poverty Task Force would like to acknowledge our **funders** for their generous support, including the **City of Guelph**, **County of Wellington**, and **United Way Guelph Wellington Dufferin**.





# CONTACT INFORMATION



WWW.GWPOVERTY.CA

INFO@GWPOVERTY.CA

@GWPOVERTY

1-800-265-7293 x. 4359

RANDALIN ELLERY, COORDINATOR

DOMINICA MCPHERSON, ASSISTANT COORDINATOR